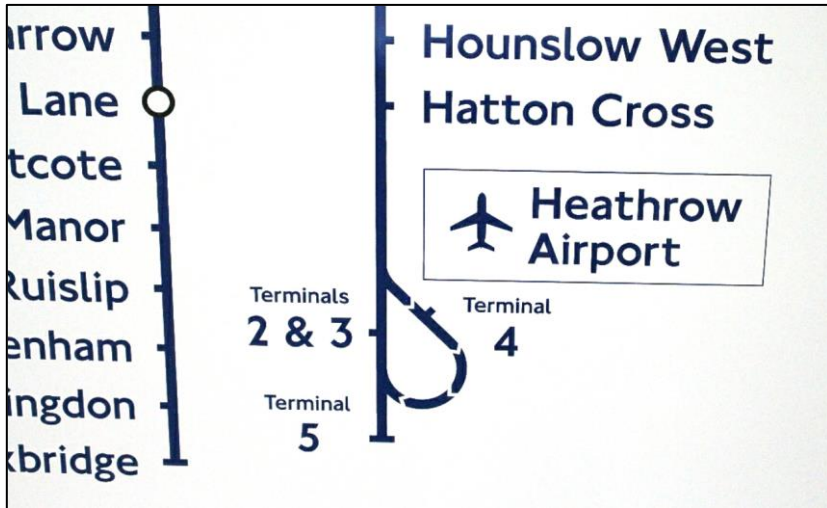


# NEWS AND NOTES



## HEATHROW

Continuing on from pages 423-425 from the last issue of *Underground News* regarding the signage for Heathrow T1, 2 & 3, just after that edition closed for press, a new station line diagram was discovered at Hammersmith. Not all signs on the station had the new name with some still displaying Terminals 1, 2 & 3.

**Left:** The revised signage on the westbound at Hammersmith, west end, seen on 16 July 2018.

**Photo: Brian Hardy**

## TRAINS FOR HEATHROW



Central Line and S7 car line diagrams have been receiving new interchange stickers to indicate 'Trains to Heathrow' and 'TfL Rail' interchange at both Paddington and Ealing Broadway. There is some debate as to whether Ealing Broadway needs both 'Trains to Heathrow' and 'TfL Rail' stickers, as at that station they are one of the same thing, as the former Heathrow Connect service is now part of TfL Rail, even though the former stock is still used on that service but with TfL Rail roundels.

The three variations of stickers are seen with interchange at Paddington and Ealing Broadway on S7 trains.

**All photos: Colin Smith**

## FOOTBALL CELEBRATIONS

Whatever the outcome of the World Cup, the Underground celebrated the achievements of the England Team through the name of the team manager, Gareth Southgate. For 48 hours, some of the station name roundels at Southgate were renamed, being stickers over the proper name.



*Not all roundels on every platform were treated. There seems to have been four on each platform that were not amended, and only the column roundel nearest the entrance (not the fascia itself) was done.*

**Photos: David Rowe (Top and Above Right)  
Donald McGarr (Left)**



**Above:** (Left) The main roundel at the bottom of the lighting pole outside Southgate station.

**Photo:** David Rowe

**Above:** (Right) As the World Cup progressed, there was much made of the Cup 'coming home' after some 52 years, but it was not to be. The acetylene rail cutters got a bit carried away prematurely, seen amongst the scrap rail at Mill Hill East on 12 July 2018.

**Photo:** Brian Kemp

## AWARD FOR TOTTENHAM COURT ROAD



**Photo:** Brian Kemp

## A STOCK – THE END

Further to the photographs in the July 2018 issue of *Underground News*, the final four-car unit to be sent for scrap departed Ealing Common depot (via the LT Museum's compound) on 17 and 18 July 2018. This leaves just trailer 6110 at Acton for LT Museum use and driving motor 5034 (ex-5008) in the Museum at Acton as a static exhibit.



DM 5234 awaits departure from the LT Museum compound on 17 July 2018 (Top).

The two trailers of the last unit loaded and ready for departure, with 6234 (Above, Left) and 6235 (Above, Right). It will be seen that 6234 still retains its de-icing shoebeam.

**Photos: Fred Ivey (Top – published with permission) and David Brabham (Above, Left and Right)**



**Above:** On 18 July 2018, DM 5235 is seen outside Acton Town station, with adjustments being made before its trip up the motorway to Booths in Rotherham. This unit's numbers were not, of course, the originals – see page 388 of the July 2018 issue for details.

**Photo: Fred Ivey**

## DLR DISCOVERY



DLR tourist train called “DLR Discovery” will run for six weeks on Saturdays and Sundays only from 4 August to 9 September 2018. The two-vehicle train will run non-stop from Tower Gateway to Cutty Sark one way only. It will run hourly from Tower Gateway from 10.00 to 17.00.

Passengers will be required to pay a higher fare for the service and an on board guide will provide a history of the local area between Tower Gateway and Cutty Sark. The ticket will include return travel on any normal DLR train.

The prices for the special trains are: Children (age 5-12): £4. Adults: £8. Family rate (two adults and two children): £22. Group rate (four plus adults): £7 per person. Tickets to be booked in advance from:

<https://tfl.gov.uk/dlr-discovery>

## 1938 TUBE STOCK TEST TRIPS



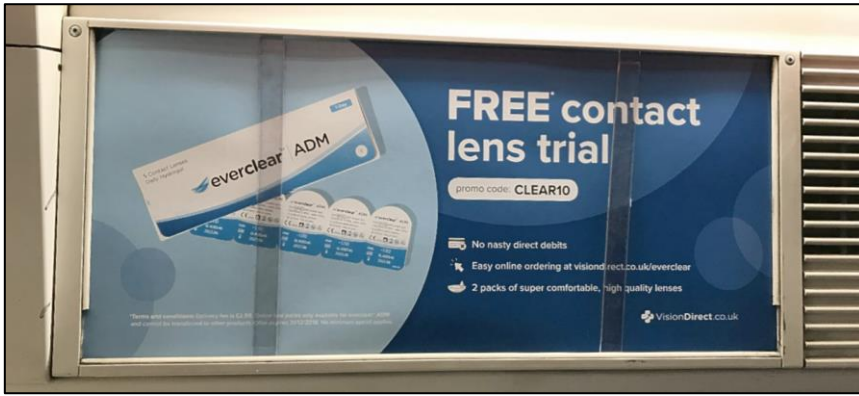
On the back cover of this issue, there are two photographs of the LT Museum's 1938 Tube Stock unit on test prior to the special runs on Sunday 9 September 2018. These views show the train in Northfields Depot (Left) next to 1973 Tube Stock and at Uxbridge (Right). It is planned that the 1938 Stock unit will make public runs between Harrow-on-the-Hill and Amersham on that day.

**Photos: Kevin Fisher (Above, Left) and David Brabham (Above, Right)**



**Above:** The 1938 Stock unit in the eastbound local platform at Northfields on 19 July 2018 on the right, while an eastbound Piccadilly Line train arrives on the left.

**Photo: Paul McLauchlan**



## ADVERT HOLDING STRIPS

Noticed (Left) on 4 June 2018, the advert cards in Central Line 1992 Tube Stock DM car 91055 (and the rest of the train) are being held in place by clear plastic strips. This is presumably to stop them falling out, which they are prone to do. Maybe in time this will be done throughout the fleet ...

**Photo: Richard Clowser**



## METROPOLITAN LINE ENGINEERING WORK

Work continues on the track and drainage work between Finchley Road and Baker Street as noted in the 'Planned Engineering Work' section. At Baker Street in platform 1 on 7 July 2018, the concrete mixer that is used on the project is seen. It was built by Blend Plants and is mounted on former FEA wagon 640932. It is expected that the work will be completed by the end of the year, hence the reason for additional weekend closures, It is expected that normal timetables will then be reinstated

**Photo: Paul McLauchlan**

**ALL FOUR MPUs TOGETHER**



*On Thursday 12 July 2018, the remaining pair of Motive Power Units for the erstwhile (new, and now cancelled) Tunnel Cleaning Train, comprising DMs 3007 and 3107, were moved from 'the Works' to join the pair that have been there for several months (3022 and 3122), as seen on 13 July 2018 (Above). The pair are seen (Overleaf, Top) on the same date, nuzzled up to, but not coupled to, 3022 and 3122.*

**Both photos: Colin Smith**





### THE RETURN OF CRAVENS HERITAGE TRAINS CAR 3907

*Below: 1960 Tube Stock Cravens-built DM 3907 returned from Acton Works to Ruislip Depot on 17 July 2018 and is seen manoeuvring out of Bollo Lane into Gunnersbury Lane at Acton Town.*

**Photo: Fred Ivey**



## NEW TRAINS FOR GREAT NORTHERN (GN&C)

**Below:** As reported in the July issue of *Underground News*, page 373, the production of the new six-car class 717 trains for Great Northern (which will replace the class 313 Stock) is in full swing. On 11 July 2018, the first two units (717.007 and 717.008) were delivered, being seen approaching Tonbridge on South Eastern metals.

**Photo:** Howard Lewsey



### SLOANE SQUARE

Non-standard stick-on roundels with a brown 'frame' have been applied to a blue hoarding on the westbound platform at Sloane Square station, seen on 16 July 2018.

**Both photos:** David Rowe



## BARONS COURT

On 26 July 2018 it was noted that the new dot matrix indicators had been commissioned on all four platforms at Barons Court, but the old (and recently refurbished) 'light box' indicators were still in use. Whether they will be removed or retained is not known at present. Maybe they are 'listed'? The strange thing is that the new indicators are further west than their predecessors, especially on the westbound. It is interesting to note that the eastbound District Line platform has never had a train describer before.



**Photos: Colin Smith (Top Left and Above) on 27 July 2018  
 Brian Hardy (Top Right on 3 September 2009 and before refurbishment).**